

# RTA Cabinet Assembly Instructions

## Tools



Hammer

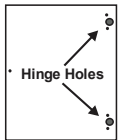


Phillips Screwdriver



Drill Gun (Optional)

## Cabinet Components



A. (2) Cabinet Doors



B. (2) Side Panels



C. (2) Top and Bottom Panels



D. (2) Back Braces (Pre-drilled for cabinet hanging brackets)



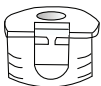
E. (1) Shelf



F. (4) Shelf Pins



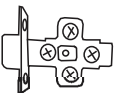
G. (22) Cam Lock Pins



H. (22) Cam Locks



I. (10) Flat Head Screws



J. (4) Door Hinges



K. (2) Door Knobs with fastening screws



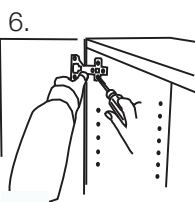
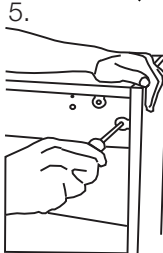
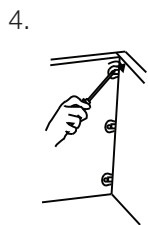
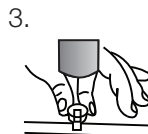
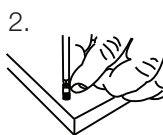
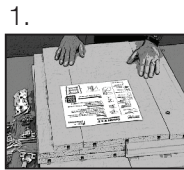
L. (2) Hanging Brackets  
(2) 1" Flat Head Screws



M. (2) Door Bumpers



N. (1) Assembly Instructions



## Step A

### Assemble the Cabinet Box

1. Inspect the cabinet contents. Read the Assembly Instructions (N) and watch the video (scan QR Code below).
2. Install the Cam Locks Pins (G) into the pre-drilled holes of the cabinet Side Panels (B) using a Phillips screwdriver.
3. Using a hammer, tap the Cam Locks (H) into the pre-drilled holes of Side Panels (B), Top and Bottom Panels (C). Install Cam Locks (H) with openings facing out.
4. Attach the Top and Bottom Panels (C) to the Side Panels (B).

**TIP:** Tilt and turn the screwdriver to lock the cams.

**TIP:** Do not fully tighten until assembly is complete.

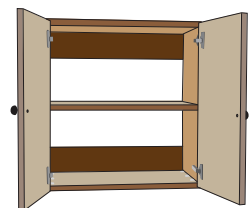
5. Attach the two Back Braces (D) to the two Side Panels (B). Note: The top back brace is pre-drilled to accept the cabinet hanging brackets.

## Step B

### Assemble Cabinet Doors to the Cabinet Box

6. Laying the Cabinet Doors (A) flat, next to the Side Panels (B), install the doors to the side panels (Door Hinges (J)). Use the Flat Head Screws (I) into the pre-drilled holes.
7. Install the two Door Knobs (K) into the pre-drilled holes. Install the two Door Bumper (M) tabs into the top corners.

**TIP:** Do not tighten the hardware completely until doors are assembled and aligned.



## Step C

### Attach the Slatwall Brackets

8. Install cabinet Hanging Brackets (L) to the back plate.
9. Install the cabinet Hanging Brackets (L) with the Z-back facing out in the pre-drilled holes.