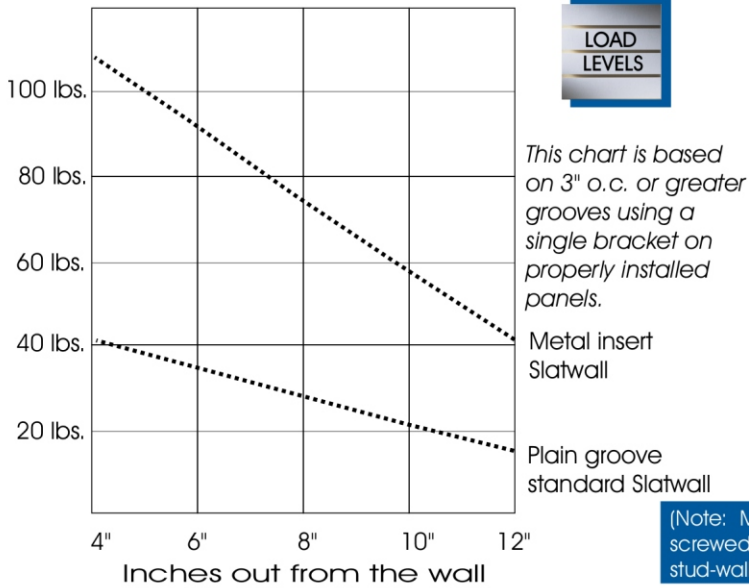
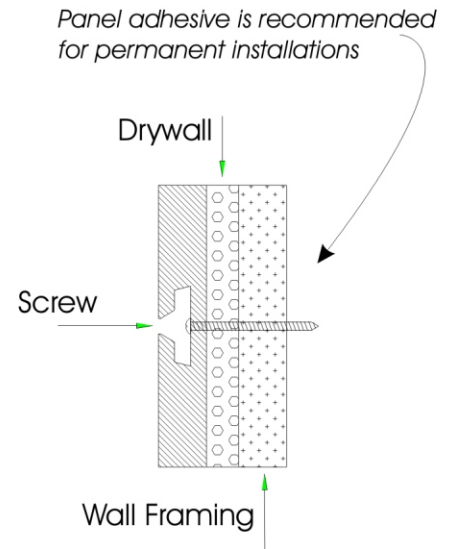


### Maximum load level capacities

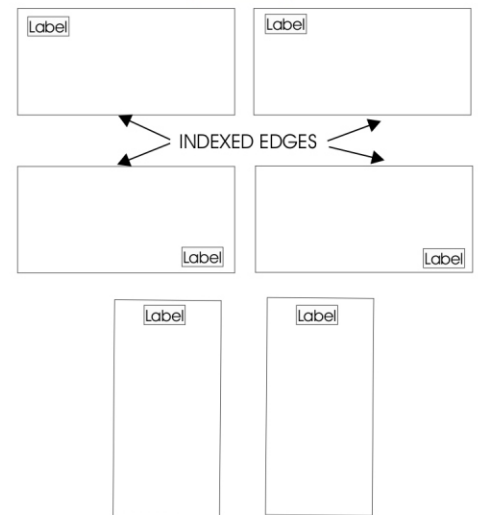


- The load levels shown above are based on properly installed panels over drywall and onto a stud-wall.
- We caution against:
  - overloading any single groove.
  - hang-bars and waterfalls overloaded with weight.
  - heavier weights near the edges.
  - not using panel adhesive or enough screws to secure the panel to the wall.
- If hanging strength is an issue, please contact us to discuss alternatives prior to placing your order.
- 150 pound internal bond strength board will add approximately 10% more holding power.

### INSTALL DIAGRAM



### MOUNTING DIAGRAM



Follow the mounting instructions on the back of the panels for best alignment.

### FIRE RATINGS

Fire rated panels are available on request

### Slatwall Panel Fire Rating Chart

Type	Groove	Flame spread	Class
Paintable	Plain	116	C
Veneer	Plain	170	C
HPL	Plain	100	C
HPL	Metal	120	C
HPL	Plastic	150	C
Melamine	Plain	175	C
Melamine	Metal	170	C